

Product Data

Quiet Qurl® 040 RF MT

With Reinforced and Muffling Technology Enhancement

A Noise Control Mat | Part # for 10 rolls: 01-X-0067 | Part # for 8 rolls: 01-X-0068

Description

Quiet Qurl® 040 RF MT is a 0.40-inch, random-filament, cusped, geometric patterned core sound control mat designed to limit impact noise between floors.

The core is produced from an extruded polymer matrix of tangled monofilaments, which are heat-welded at the junctions to form a resilient structure that absorbs noise when sandwiched in a mass-spring-mass building design. It is made with a reinforced scrim to give gypsum concrete additional tensile strength.

On the bottom side of the MT version, a highly compressible polyester fabric is bonded. This muffling fabric almost completely compresses when installed with a 1.25" gypsum concrete floor underlayment.

Quiet Qurl 040 RF MT is fitted with Zip-Strip adhesion technology. Zip-Strip, a quick peel adhesive strip, is applied to the selvage edge to promote a quick and cost effective installation solution.

Applications

- ✓ Multi-family construction: apartments and condominiums
- ✓ When a resilient ceiling is installed
- ✓ Radiant-heated flooring when pumped with lightweight concrete or gypsum
- ✓ With hard surfaces: concrete, stone, tile, vinyl and hardwood
- ✓ With topping layers such as: gypsum concretes, lightweight concrete, mortar beds and plywood
- ✓ With many types of subfloors, and still achieves an IIC of 50 or greater
- ✓ Helps to achieve an STC level of 50 or greater with many types of subfloors

Features and Benefits

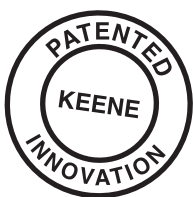
Excellent performance at reducing sound in mid and high frequencies

Performance in wood frame construction and concrete structures

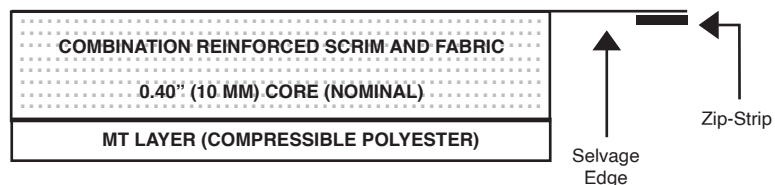
Minimal deflection, and no creep or long term degradation

Provides a thin profile for tight construction assemblies

Lightweight and easy to handle



Patent No.: US 7,096,630
& US 8,146,310



Physical Properties

Description	Means of Measurement		Value	
	English	Metric	English	Metric
Core Polymer			Polymeric	
Thickness	Inches	Mm	0.40	10.0
Total Weight	oz/yd ²	g/m ²	22.3	761
Core Weight	oz/yd ²	g/m ²	17.0	581
Fabric Weight	oz/yd ²	g/m ²	2.3	75
2nd Fabric Weight	oz/yd ²	g/m ²	3.0	105

Packaging

Description	Means of Measurement		Value	
	English	Metric	English	Metric
Core Width	Inches	CM	48.0	122
Length	Feet	Meters	50.0	15.8
Area	Square Feet	Square Meters	200	18.6
Roll Diameter	Inches	CM	24.0	61.9
Roll Weight	Pounds	Kg	30.0	13.6

See installation instructions for methods and procedures.

Limitations:

1. Always use perimeter isolation on all walls and penetrations where QUIET QURL will be installed.
2. Always use bulk head to define the area where QUIET QURL will be installed and where carpeted areas without sound mat will begin (see KEENE IDEA).
3. Compressive strength should be a minimum 2000 psi for gypsum underlayment.
4. Gypsum underlayment can crack at doorways and outside corners, consider reinforcement in those areas.
5. Heavy traffic areas and a confluence of doorways can be prone to cracking, consider reinforcement in those areas.
6. ADA units with constant wheeled traffic can be prone to cracking, consider thicker underlayment, reinforcement and floor finishes that spread the load over a greater area.
7. Field sound tests cannot be guaranteed since each component in the assembly and its installation are critical to overall STC and IIC performance.

LIMITED WARRANTY: Keene Building Products, Inc. warrants to the initial purchaser only that the goods sold hereunder will be free from defects in material and workmanship and, except as otherwise set forth herein, will conform to the specifications provided. If any failure to meet this warranty appears within one year from the date of shipment of the goods, on the condition that Keene Building Products, Inc. will correct any such failure by either replacing or repairing any defective goods, at Keene Building Products, Inc.'s option.

The preceding paragraph sets forth the exclusive remedy for all claims based on failure of or defect in the goods sold hereunder, whether such failure or defect arises before or during the warranty period and whether a claim, however instituted, is based on contract, indemnity, warranty, tort (including negligence), strict liability or otherwise. The forgoing warranty is exclusive and is in lieu of all other warranties whether written, oral, implied or statutory.

QUIET QURL is a component in an overall floor/ceiling assembly. Its performance is affected by every other component and the likelihood of achieving code compliance is contingent upon many other trades including framers, plumbers, drywall contractors to name a few. Developers and general contractors are responsible for building properly and testing field performance as soon as possible in order to assure the reliability of the project.

WARNING: Laboratory tests are not a guarantee of field performance because of the issues noted above and many other design errors that may occur. Please consult a professional acoustical consultant to assure plans are proper and that the floor/ceiling assembly can perform to expectations.



P.O. Box 5938
 Cleveland, OH 44101
 Info@KeeneBuilding.com
 KeeneBuilding.com

877 | 514 | 5336
 P 440 | 605 | 1020
 F 440 | 605 | 1120