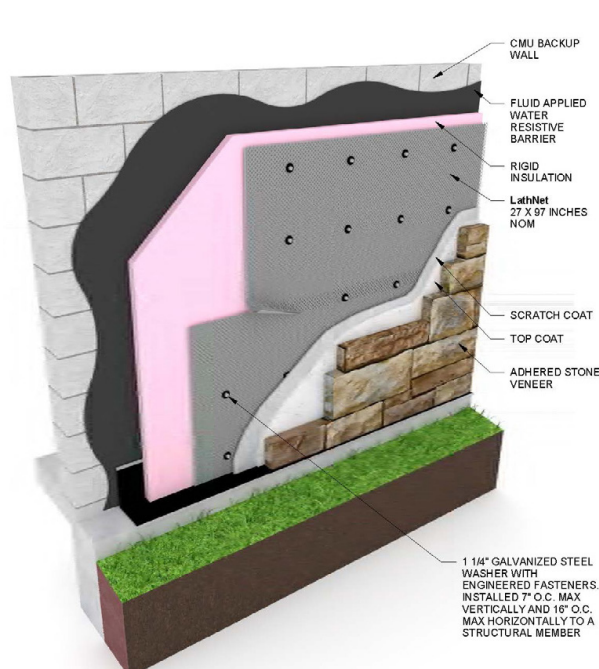


Driwall™ LathNet

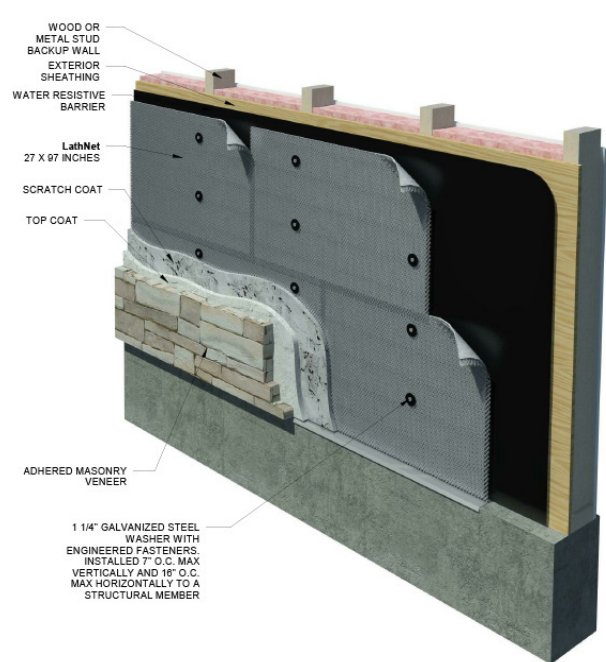
Designed for use with stucco, thin brick, stone and other types of adhered masonry

Driwall LathNet is a metal lath and drainage plane system that provides a continuous drainage plane between the lath and weather resistant barrier.

The Masonry Advisory Council recommends that in exterior adhered masonry wall systems, a drainage mat be installed to drain any water that has penetrated to the flashing. A galvanized expanded metal lath, or diamond mesh, should be attached atop the drainage mat.



LathNet Over CMU & Insulation Detail



LathNet Over Wood Stud Detail

Features and Benefits

Faster, easier installation than installing a drainage plane and lath separately

Installs like standard metal lath, no new installation skills or tools necessary

Combines proven components in an engineered and tested system

Clearly shows 1" minimum lath overlap

Promotes full lath encapsulation without clogging the drainage plane

Drainage mesh provides an effective mortar barrier

Self-furring

Drainage mesh edges butt together to form a continuous drainage plane

Lath is 2.5 lb dimpled, diamond mesh G-60 galvanized expanded steel for high strength and corrosion resistance

Drainage plane is a structural strand polymer mesh that allows unrestricted flow of moisture to the weep holes

Assembled in the USA from 100% USA-made materials

Conforms to ASTM C847 Size