

# Driwall™ LathNet

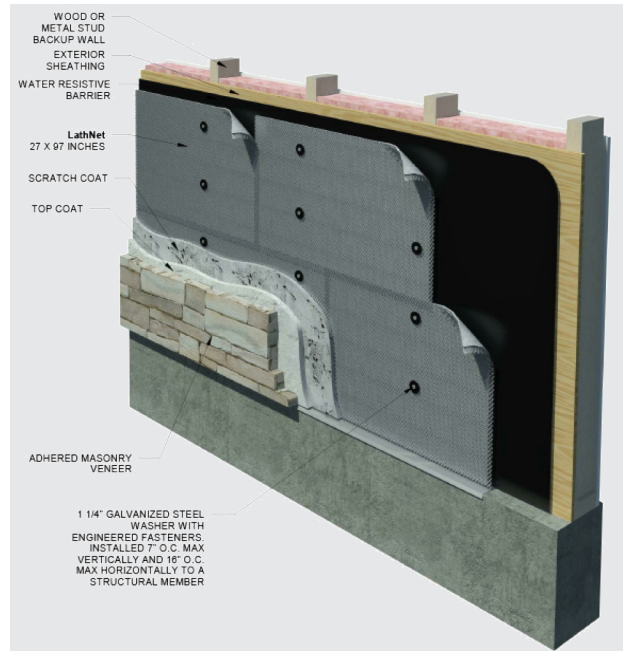


## Description

A factory-assembled, patented, solution combining a NEW structural strand polymer drainage mesh that offers up to 5 times greater airflow and self-furring, 2.5 lb. Stainless Steel 304 Alloy expanded metal lath for use with adhered masonry, including stucco, thin brick, and stone. It provides a continuous drainage plane between the lath and the weather resistant barrier. It installs like standard metal lath, provides a minimum 1" lath overlap to comply with ASTM C847 and promotes full lath encapsulation without clogging the drainage plane. It provides an effective barrier to mortar bridging and the continuous drainage plane allows rapid, unrestricted moisture flow to the weep holes and unrestricted air flow behind the lath to help promote drying. Product is shipped in 27 inch wide by 97 inch long sheets.

## Short Form Spec

Provide factory-assembled 27 inch wide by 97 inch long sheets of 0.25 inch thick mesh drainage plane and self-furring, 2.5 lb. Stainless Steel 304 Alloy expanded metal lath system to maintain air flow and drainage behind adhered masonry veneers. Install continuously behind all adhered masonry per manufacturer's instructions.



**Product:** Subject to compliance with requirements, provide "Driwall LathNet™" as manufactured by Mortar Net Solutions™.

## Manufacturer

Mortar Net Solutions™  
6575 Daniel Burnham Drive Suite G, Portage, Indiana 46368

Telephone: (800) 664-6638 Fax: (219) 787-5088  
Email: info@mortarnet.com Website: www.mortarnet.com

**Specifier Note:** LathNet is manufactured of a 0.25 inch thick structured strand polymer mesh and a self-furring, Stainless Steel 304 Alloy expanded metal lath that is factory assembled to provide a continuous drainage plane behind adhered masonry veneers. It is appropriate for use wherever standard 2.5 lb. Stainless Steel 304 Alloy expanded metal lath is appropriate and where the adhered masonry veneer will be exposed to moisture.

## Substitutions

No substitutions permitted.

- LN-1 LathNet™: (2.5 lbs): 27" wide x 97" high x 0.25" thick material
- LN-2 LathNet™ (2.5 lbs): 27" wide x 97" high x 0.4" thick material
- LN-3 LathNet™: (3.4 lbs): 27" wide x 97" high x 0.25" thick material
- LN-4 LathNet™: (3.4 lbs): 27" wide x 97" high x 0.4" thick material

Specification Title: \_\_\_\_\_

Project: \_\_\_\_\_ Date: \_\_\_\_\_

Firm: \_\_\_\_\_ Phone: \_\_\_\_\_

Approval: \_\_\_\_\_ Date: \_\_\_\_\_

General Contractor: \_\_\_\_\_

Bid Date: \_\_\_\_\_

