

Installation Instructions

Driwall™ Prefabricated Composite Drain for Residential Foundations – Block, Poured Concrete (*All Versions*)

Inspection of Wall Membrane and Wall Conditions

Ensure that the wall is free from structural defects, any membranes are properly installed, and the final system will have a graded evacuation drainage system (typically a perforated pipe) connected to a storm sewer line or drainage ditch.

Installation of Driwall Prefabricated Composite Drainage (PCD)

1. Driwall™ Prefabricated Composite Drainage (PCD) can be installed using a termination bar, construction adhesive or a ledger board.

A. Termination Bar – Mechanically fasten a termination bar on the foundation wall 6.0 feet (1.85 meters) from the footing base, using a Hilti-type fastening system and affixing the termination bar, below the finished soil line. Insert the Driwall Prefabricated Composite Drain into the termination bar working horizontally and using mechanical fasteners and washers to create a direct connection to the bar. Drape the Driwall PCD down the wall, ensuring that the material covers up the intersection of the wall to the footer. Generously apply construction adhesive to the wall so that the Driwall™ PCD does not flap in the wind if left exposed overnight. Proceed to next piece for installation, using a construction adhesive to adhere each strip to the neighboring piece. For less than 6.0 feet (1.85 meters) wall height, use one-meter-wide Driwall™ PCD, placed horizontally.

When completed with the entire foundation, wrap the perforated pipe with a geotextile fabric, gluing the top of the fabric to the Driwall™ PCD.

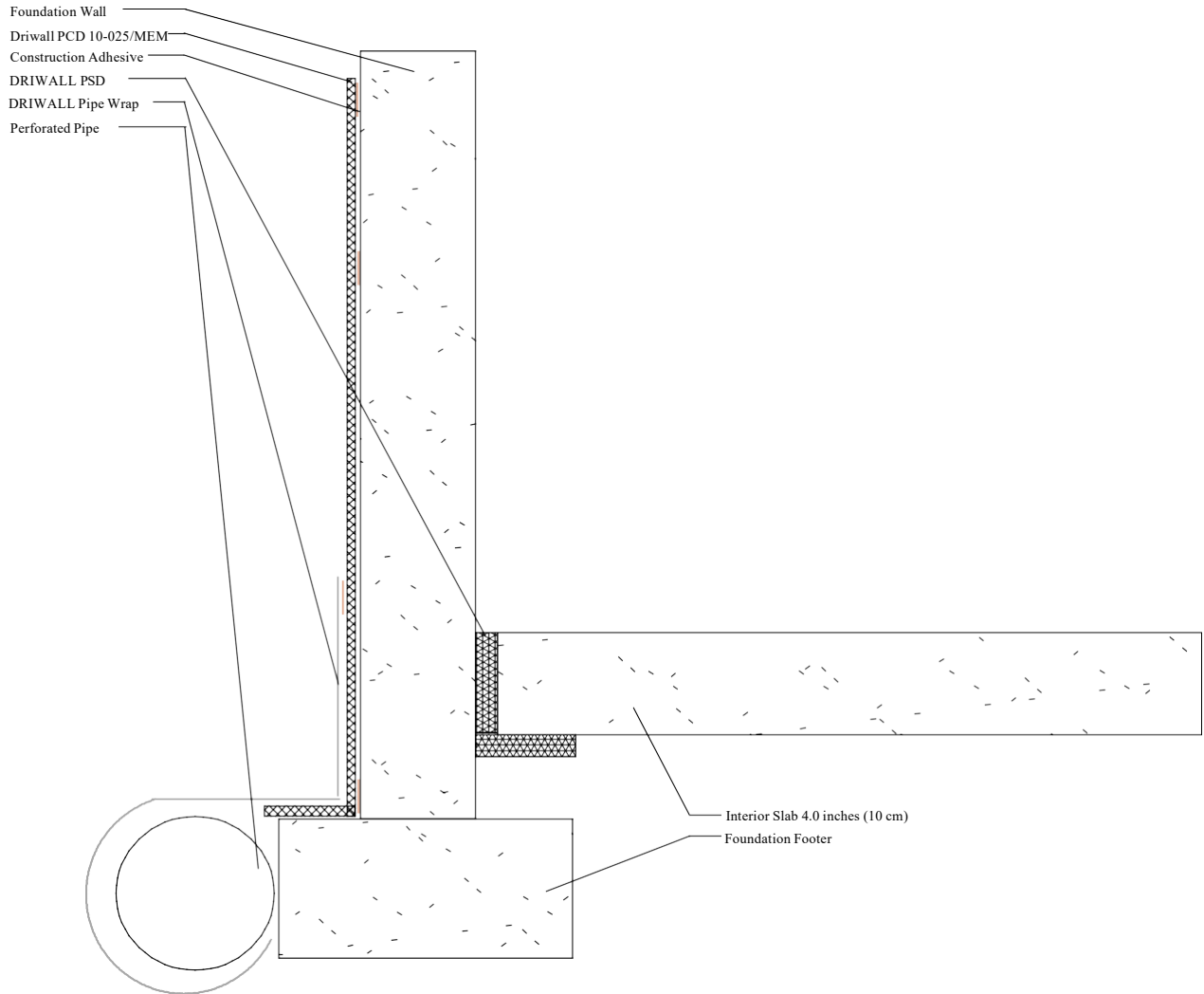
B. Construction Adhesive – For two-sided Driwall™ PCD, construction adhesive can be generously applied to one side of the PCD and directly adhered to the wall. Place the material horizontally. Apply a generous bead of construction adhesive 6.0 feet (1.85 meters) from the base of the footing base on the foundation wall. Place the Driwall™ PCD horizontally along the foundation wall, draping the material over the footing and imbedding the top fabric flap into the bead of adhesive. Terminate the top of the PCD with fabric or tape to ensure that soil particles do not have a path to enter the core. For one-sided Driwall PCD, remove a 3-inch (8-cm) section of core from the fabric and adhere the fabric to the wall with a fast setting construction adhesive. Construction adhesive must be compatible with membranes. Consult the membrane manufacturer for compatibility. Driwall can be adhered without issue with both solvent and water-based adhesives.

When completed with the entire foundation, wrap the perforated pipe with a geo-textile fabric, gluing the top of the fabric to the Driwall™ PCD.

C. Fasten a wood board to the masonry or concrete wall with a Hilti-type mechanical fastening system. Affix the Driwall (PCD) to the wood board using a screw-and-washer fastening technique, and spacing the fasteners every 18 inches or as necessary to firmly fasten. Drape the Driwall™ PCD down the wall and completely wrap around the perforated pipe. Proceed to next piece for installation, using a construction adhesive to adhere each strip to the neighboring piece. For less than 6.0 feet (1.85 meters) wall height, use one-meter-wide Driwall™ PCD, placed horizontally.

Backfill after Driwall Prefabricated Composite Drainage (PCD) Installation

A. Backfill with natural soil, carefully placing 1 foot of soil (30 cm) and compacting after placement. Repeat backfill procedure in 1-foot increments until the wall is completely filled. Place an additional 1 foot (30 cm) of soil to allow for some settlement.



P.O. Box 241353
 Mayfield Heights, OH 44124
 Info@KeeneBuilding.com
 www.KeeneBuilding.com

877 | 514 | 5336
 P 440 | 605 | 1020
 F 440 | 605 | 1120